

Try it for Free

Download an HPC trial license at
www.eti.com/products/connectors.html

"We considered writing our own connector to load Teradata to Microsoft SSIS for an important Oliver Wyman client. We also evaluated a number of commercial utilities, some of which did not even work. From our testing, ETI's High Performance Connector was not only well documented and easy to install, but it also outperformed all of the other options. Installation was easy and our couple of technical questions were answered immediately when we called ETI support. With ETI's HPC, we were able to install, test, purchase and deploy to production with minimal time or effort."

Project Manager, Oliver Wyman (formerly Mercer Management Consulting) for the benefit of a Fortune 50 company

ETI High Performance Connectivity for Teradata and SSIS

ETI, a Teradata Technology Partner and Microsoft Gold Certified Partner, provides high performance connectivity products (HPCs) for moving limitless volumes of data bi-directionally between Teradata and Microsoft SQL Server 2005 Integration Services (SSIS). ETI HPCs are designed to work just like an OLEDB or .NET provider, except you get speed and high performance against massive volumes of data because of the tight integration with Teradata utilities and SSIS data flow adapter technology and because there is no requirement to land the data prior to loading.

ETI provides two separate and distinct HPCs for data movement between SSIS and Teradata.

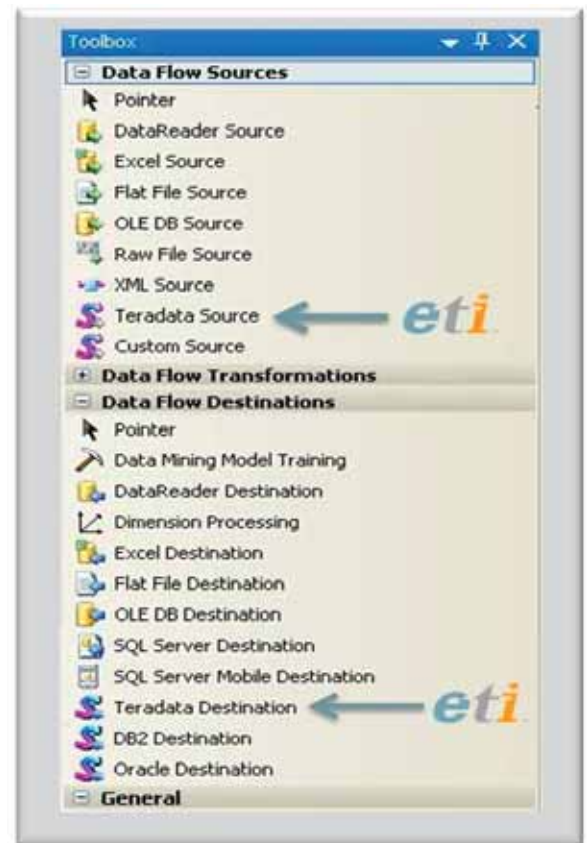
Teradata Destination moves data from SSIS to Teradata

Teradata Source moves data from Teradata to SSIS

ETI's line of High Performance Connectors requires no configuration or special training and can be deployed in as little as ten minutes. The HPCs are built to be plug-n-play with SSIS—they are easily accessible and configurable and reside on the SQL Server platform.

To install the HPCs, simply insert the ETI software on the Microsoft SQL Server SSIS platform and follow the instructions provided by the installer. Once the installation has completed, click the "Tools," then "Choose Toolbox Items" menu options in the SQL Server Business

Intelligence Development Studio. Click on the "SSIS Data Flow Items" tab and choose the HPC from the list to make it available from the "Data Flow" toolbox. Any client machine that is running SSIS can then easily configure, access and use the HPCs. The request for data is sent (at run time) over the network to the HPC. The HPC then executes native file access or executes the SQL.



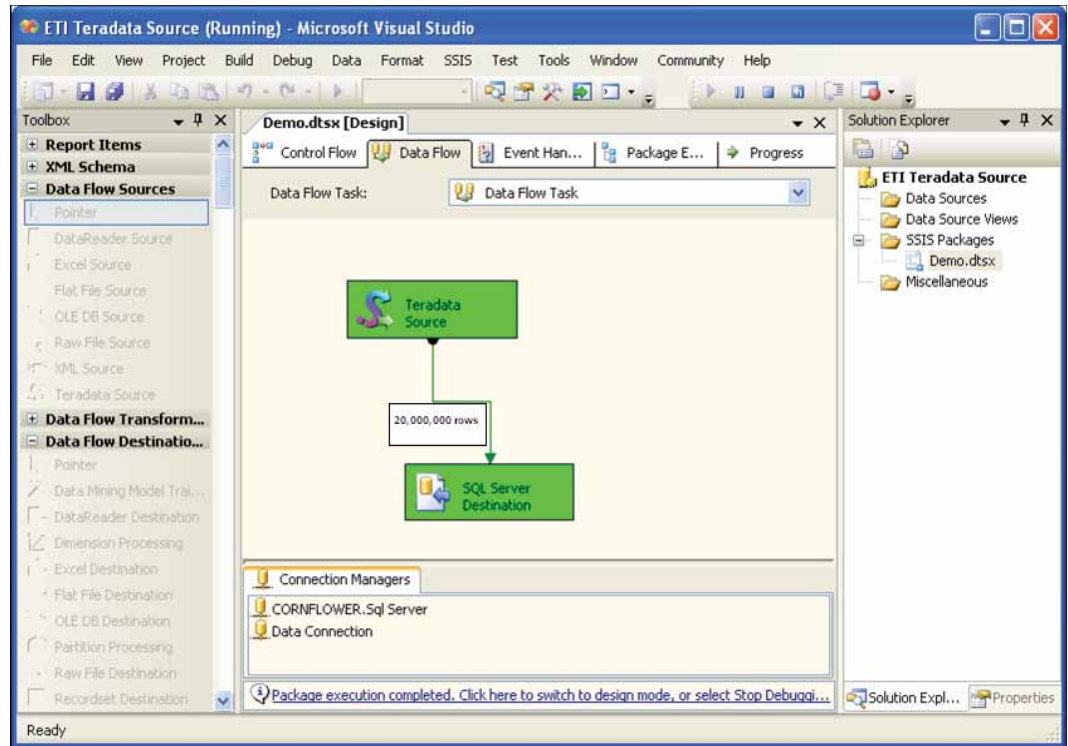
ETI HPCs Plug-in as Data Flow Sources or Destinations

Learn More

Contact ETI:

www.eti.com
information@eti.com
Austin: +1 512 383 3000
United Kingdom: +44 (0) 118 977 1221
France: +33 (0) 1 44 50 12 30

High Performance Data Integration 



"The ETI pre-built connectors provide a seamless way for customers to transfer data between Teradata and Microsoft SQL Server, while taking advantage of SSIS and Teradata's high performance database load/unload utilities."
Randy Lea, VP of Product and Services Marketing, Teradata

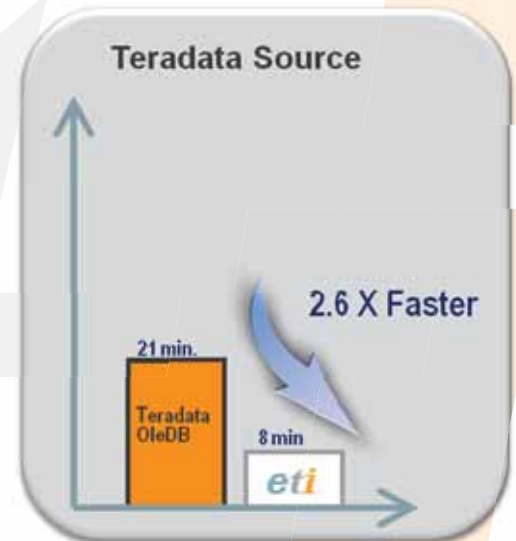
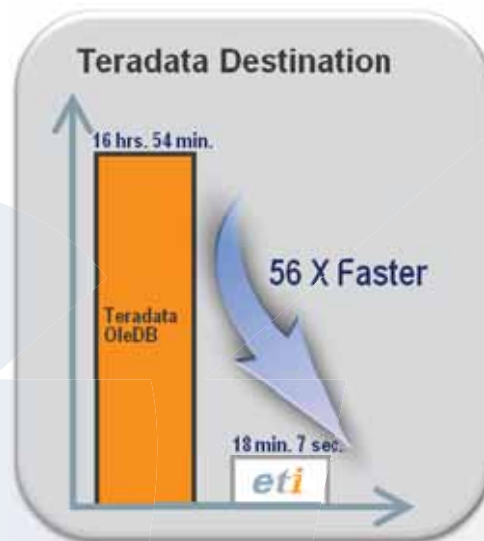
"I can tell you without hesitation that the ETI HPC makes SSIS a viable ETL option for our Teradata environment. If it wasn't for the ETI HPC, it would be extremely difficult to execute all of our loads within a 24-hour window."

John Balchunas, DBA
Jefferson County Public Schools
Louisville, Kentucky

"ETI's HPCs enhance SQL Server 2005 Integration Services' abilities to efficiently process high volumes of data bi-directionally between Teradata and Microsoft business intelligence systems. We are excited to see the results customers are experiencing using SQL Server 2005 and ETI HPCs to leverage their Teradata investment."

Tom Casey, General Manager for SQL Server Business Intelligence, Microsoft Corp.

ETI HPCs for Teradata products have been formally tested and performance measured by Teradata and Microsoft at a Teradata Competency Center. The testing was conducted using a 20-million row fact table. The results were up to 56x faster than the OLEDB provider as depicted below. Additionally, ETI has tested and verified its products on the new Teradata 12 database and each of the products continues to provide high performance data integration support, leveraging the reliability and performance of Teradata 12.



No-Risk Trial Offer

ETI provides a two-week trial license for all of its HPCs via download from its web page:

www.eti.com/products/connectors.htm